

## SECURE

Designed to be as structurally sound as possible, our panels and gates exceed the architectural requirements for material and composition. Our lockers provide the most robust solution for maximum security.

## DURABLE

Made with high-grade, 14 gauge steel, it is assembled using SAE Certified fasteners and coated with the latest in powder epoxy coating resin with exceptional rust and UV protection. The coating will withstand the rigors of everyday use.

## COST EFFECTIVE

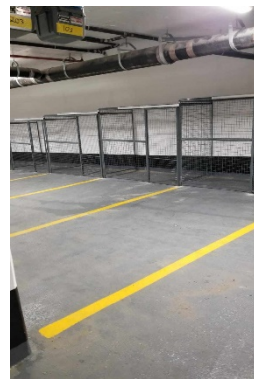
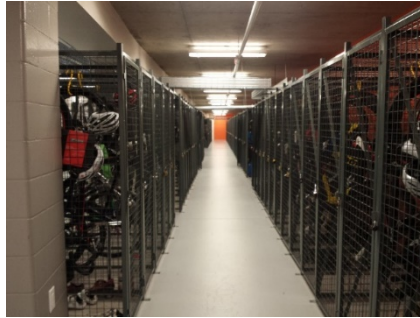
Well built does **not** mean more expensive. Canadian designed and Canadian Made, we keep the cost down by leveraging the expertise of our closest vendors to achieve a price point that is reasonable and sustainable. Our modular design allows us to 'build' a solution-set for the space available. A Win-Win.

Rugged.

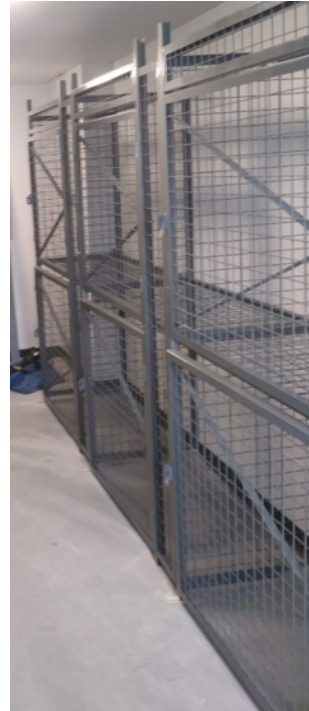
Structurally Sound.

Built to Last.

### Standard SINGLE Locker System



Standard SINGLE locker with sliding gate



### FEATURES:

- Design Simplicity
- Variations of installation configurations to meet customer requirements
- Single OR Double-Stacked lockers to address maximum space constraints
- Standard door and locker hasp locking mechanism for easy locking and unlocking

Standard DOUBLE-STACKED Locker System

### PRODUCT SPECIFICATIONS:

|                        |  |
|------------------------|--|
| <b>Frame Material:</b> | 14 Gauge, Cold-Rolled, High-Grade Steel  |
| <b>Mesh Material:</b>  | 10 Gauge, 2"x2" square, welded wire mesh for all components  |
| <b>Fasteners:</b>      | All components are SAE Certified for Strength, Durability and Performance  |
| <b>Coating:</b>        | Powdered Epoxy Resin with UV and Maximum Rust Protection   |
| <b>Weldments:</b>      | All weldments meet or exceed the CWB standards for light-gauge material welding of components which ensures exceptional performance and durability                 |
| <b>Included:</b>       | Secured Mesh Roof, Locking Hasp on both Door and Locker, Locker Numbering  |
| <b>Installation:</b>   | All installations are performed by our inhouse installation teams to ensure we meet or exceed the challenging installation schedules of our customers and partners |

Proudly Canadian Designed and  
Canadian Made!



## DESIGN SUPPORT

Layout suggestions during the design phase. We measure the areas and then provide the Shop Drawings for review, modifications and/or approval. We use both CAD and Blue Beam for layouts for reference and approvals. Custom product-mix layouts to achieve density requirements.

## TURNKEY SOLUTION

Once the design is done, the Shop Drawings are Approved ... we make sure everything else goes smoothly. When the installation is done, we hand over the 'keys' and everything is ready for use. We always include numbering so people know where their locker is.

## PRODUCT SOLUTIONS

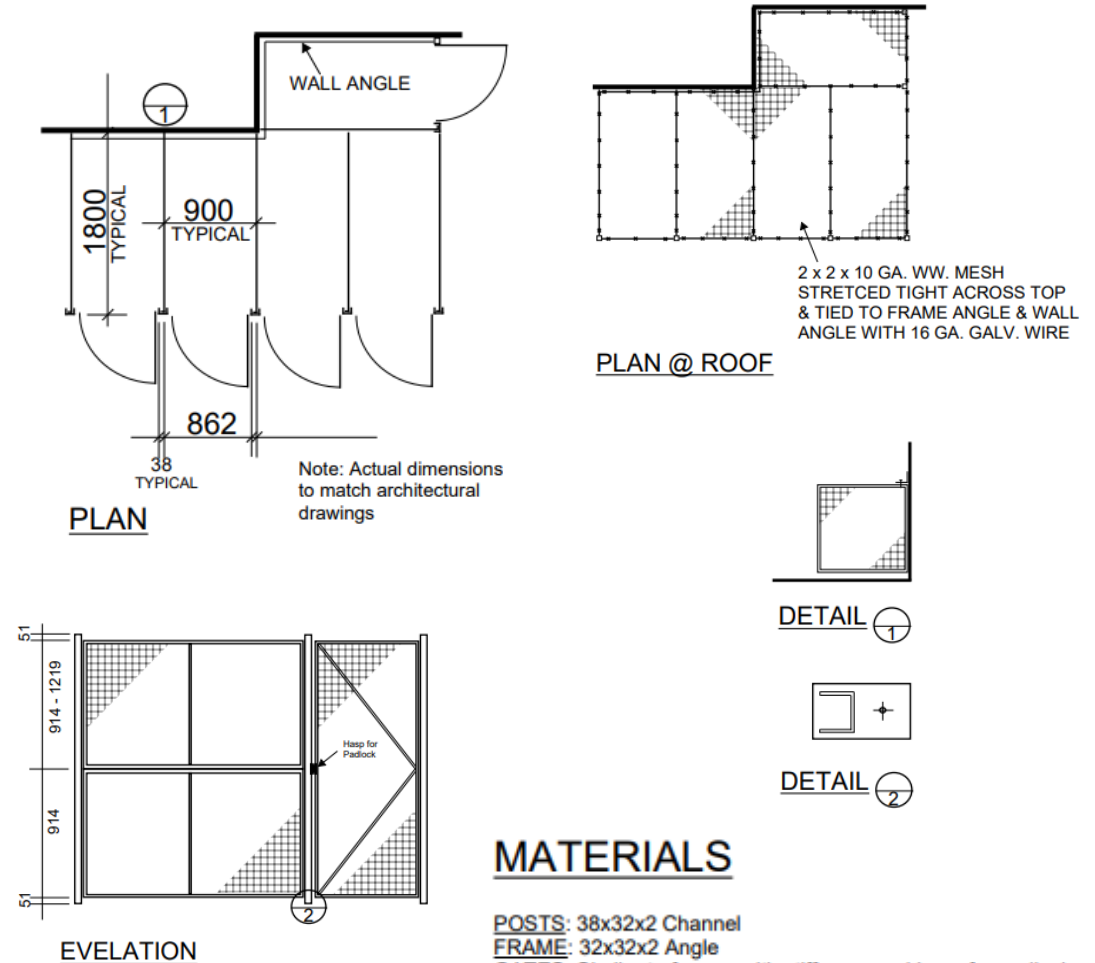
We have numerous design and layout configurations for the Single and/or Double-Stacked Systems:

- **Single** – to maximize the space available in a linear manner
- **Double-Stacked** – to address linear space constraints with a vertical solution to maximize storage availability
- **COMBO** – sometimes doing both solves many issues. Our designs allow for a seamless look and performance to benefit everyone.

For more information on any of our products or services, please give us a call.

We'd be happy to assist you in finding the best solution for your project.

Giving our customer the ability to configure layouts to meet physical constraints is our forte. We work with our customers to identify the best solutions for density, diversity of products, and ensure adherence to strict cost containment. We ensure there are NO surprises!



## MATERIALS

**POSTS:** 38x32x2 Channel  
**FRAME:** 32x32x2 Angle  
**GATES:** Similar to frames with stiffeners and hasp for padlock  
**STIFFENERS:** 25x3 Flat Bar  
**MESH:** 52x52x3.4 WWM.  
Frames fastened to posts with 10x19 Tek Screws  
Frames fastened to frames with 10x19 Tek Screws

Finish to be electrostatic air dry enamel

Details & Elevations shown are typical only

## TECHNICAL SUPPORT AVAILABLE

- [Technical Review of Architectural Layouts](#)
- [Detailed Shop Drawings with Recommended Installation Patterns](#)
- [Installation of Products](#)

**Wire Guard Solutions Inc.**  
14 Bram Court  
Brampton, Ontario L3W 6R3  
Phone 905-475-0688  
Email: [sales@wireguardsolutions.ca](mailto:sales@wireguardsolutions.ca)

Backed by our 2-Year Limited Warranty!

